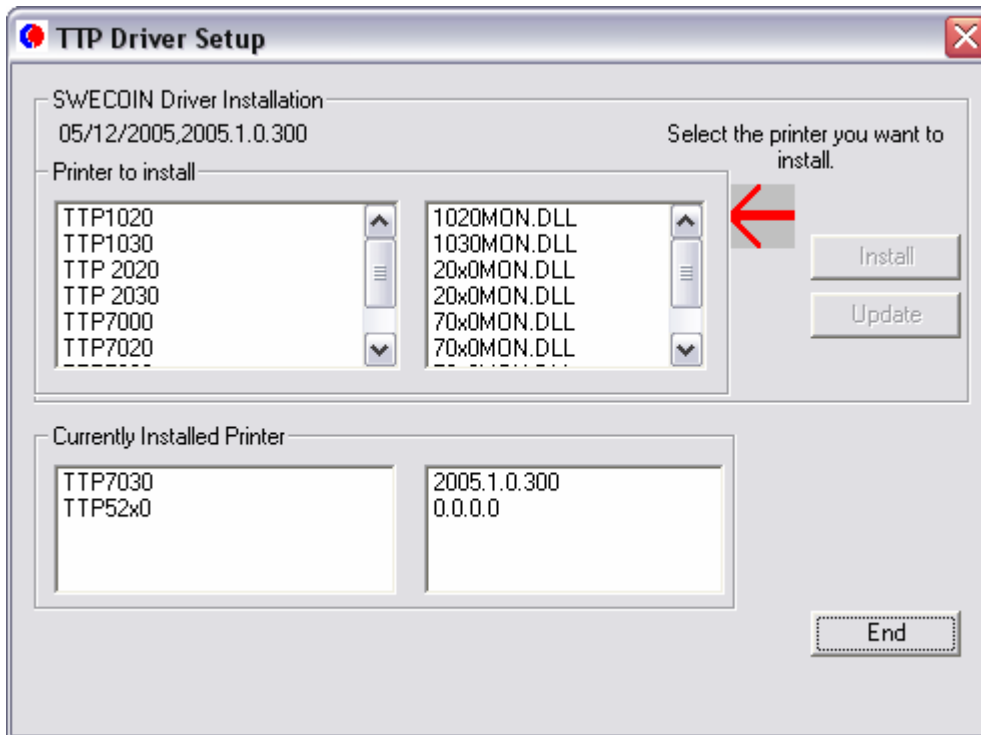


Driver update and Setup

For the ease of installing and updating the driver Swecoin provides a program which either copies all necessary files into the specific directories or updates the driver if it already exists. Swecoin driver setup is currently at version 1.0.0.8.



There are three execution methods available:

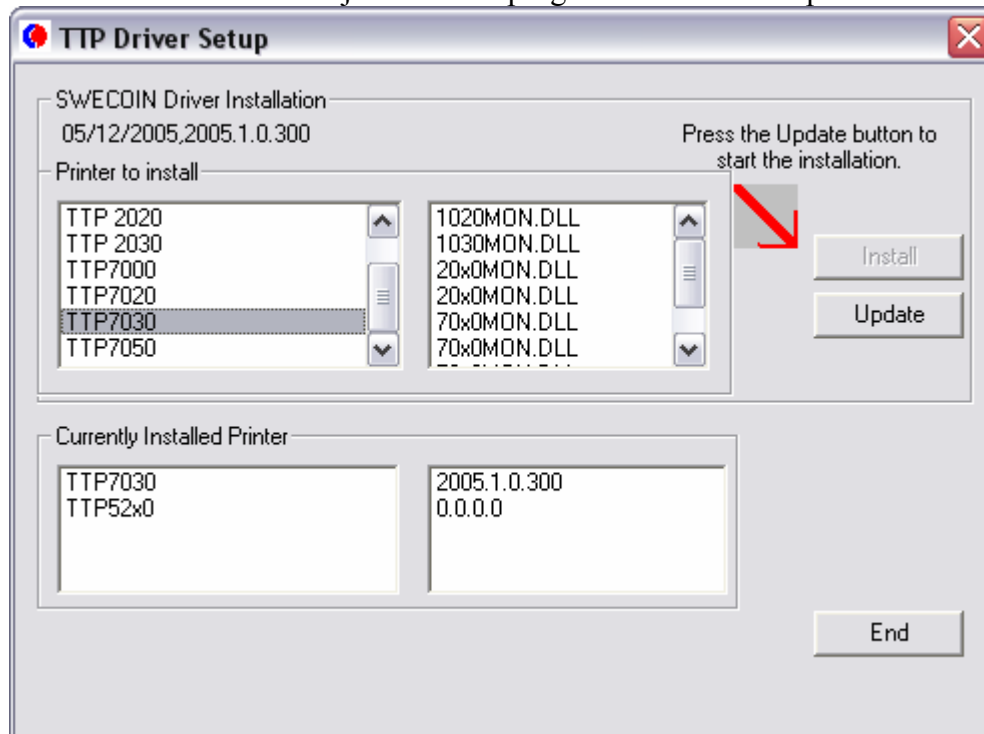
1. Manual installation and update
2. Automatic update
3. Automatic update, suppressing the Unsigned driver dialog (only for English and US OS)

In all cases the program will copy the current Language Monitor into a bak directory in the current driver file directory.

In case of the Automatic updates the program will redirect all status messages into a LOG file in the current driver file directory.

1. Manual installation and update

For the manual execution just start the program and select the printer from the list shown.



If the printer already exists the Update button is highlighted and you can click it to start the update. If the printer doesn't exist the Install button is highlighted and you need to click this one instead.

In both cases Windows will show the Unsigned driver dialog and you need to OK this to continue the process.

Once the Install (copying of the INF file only) or the update is complete, the program will signal this by disabling all upper buttons and displaying "Driver update complete".

In the case of an installation of an USB printer this process has to be done *before* the printer is plugged into the USB port so that Windows finds all necessary information and can start the "New Hardware Found" Wizard to install the printer. If you install a parallel printer you still need to install via the Add Printer Wizard if Windows doesn't detect your printer automatically.

2. Automatic update

You can also use command line parameters to automate the update process of your driver. You can call the program with the following command line parameters:

Setup.exe <INF file name> <Printer name>

All parameters are optional but you need to have them in the order shown, e.g. you have an INF file and a Printer name then use:

Setup.exe TTP127.INF TTP7030

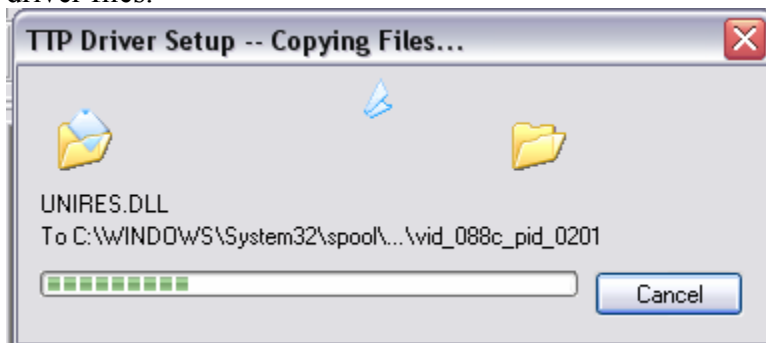
If your printer name has a space in between you need to put double quotes around the name:

Setup.exe TTP127.INF "TTP 2030"

The program will automatically detect the installed printer and will update the driver but you still need to OK the Unsigned driver dialog unless you have disabled this warning in your system.



Then after a few seconds the File Progress dialog will appear and show the copying of the driver files.



Once this disappears the installation is completed and you can open the TTP_Download.txt to verify the success of the update.

3. Automatic update with suppression of the Unsigned driver dialog

In case you don't want to disable the Unsigned driver dialog but you want a silent update without user interaction, you can use the following command line parameters:

Setup.exe <INF file name> <Printer name> <SILENT>

Note:

This is functionality works only for English (US) operating systems.

The call

Setup.exe TTP127.INF TTP7030 SILENT

will update the TTP 7030 driver automatically, if already installed, with suppression of the Unsigned driver dialog.

Appendix

Sample of a TTP_Download.txt file

```
C:\Projects\Driver\TTP1_7_8\TNT\Driver\TTP127-2005_1_0VC_Release\fre
C:\Projects\Driver\TTP1_7_8\TNT\Driver\TTP127-
2005_1_0VC_Release\fre\ttp127.inf
Swecoin_ABTP7030F7D4
70x0MON.DLL
C:\Projects\Driver\TTP1_7_8\TNT\Driver\TTP127-
2005_1_0VC_Release\fre\70x0MON.DLL
C:\Projects\Driver\TTP1_7_8\TNT\Driver\TTP127-
2005_1_0VC_Release\fre\bak
C:\WINDOWS\system32\70x0MON.DLL
Stop Spooler
SERVICE_OPEN for stop
SERVICE_STOP
SERVICE_CLOSE
SERVICE_OPEN for query
SPOOLER SERVICE not yet STOPPED
SPOOLER SERVICE STOPPED
SERVICE_CLOSE handle
Create Backup Directory
Copy Language Monitor to Backup Directory
Delete Language Monitor
Start Spooler
SERVICE_OPEN for start
SERVICE_START
SERVICE_CLOSE
SERVICE_OPEN for query
SERVICE not yet STARTED
SERVICE not yet STARTED
SERVICE not yet STARTED
SERVICE not yet STARTED
SERVICE not yet STARTED
SERVICE not yet STARTED
SERVICE not yet STARTED
SPOOLER SERVICE STARTED
SERVICE_CLOSE
SERVICE_CLOSE handle
Language Monitor backup: The operation completed successfully.
Update Driver
Driver update completed.
```