

-INFO 4.0



« - »

: 1.0
: 11.06.2009

	4
.....	4
.....	4
.....	5
	6
.....	7
.....	8
	10
.....	10
.....	15
.....	16
.....	20
.....	21
Logitech QuickCam pro 9000	24
	25
.....	25
.....	25

-INFO 4.0.

-INFO 4.0

-
-
-
-

/

	Intel Celeron 1.5 , 512 , 40* IDE
	TFT- 17",
	2 2,5
	Miscrosoft Windows Home Edition

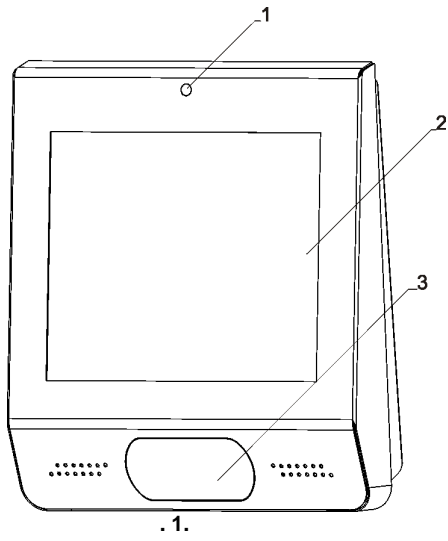
	Logitech WebCam 9000 Pro
	Metrologic MK3480 Quantum,
	3" Nippon Primex NP-K3510A

1.	-INFO 4.0	1
2.		1
3.	6 DIN 985	4
4.		2
5.		1
6.		1
7.		1
8.		1
9.		2
10.		1

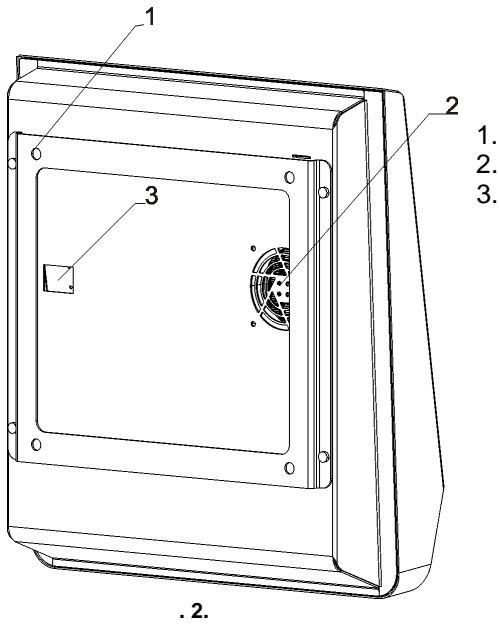
!



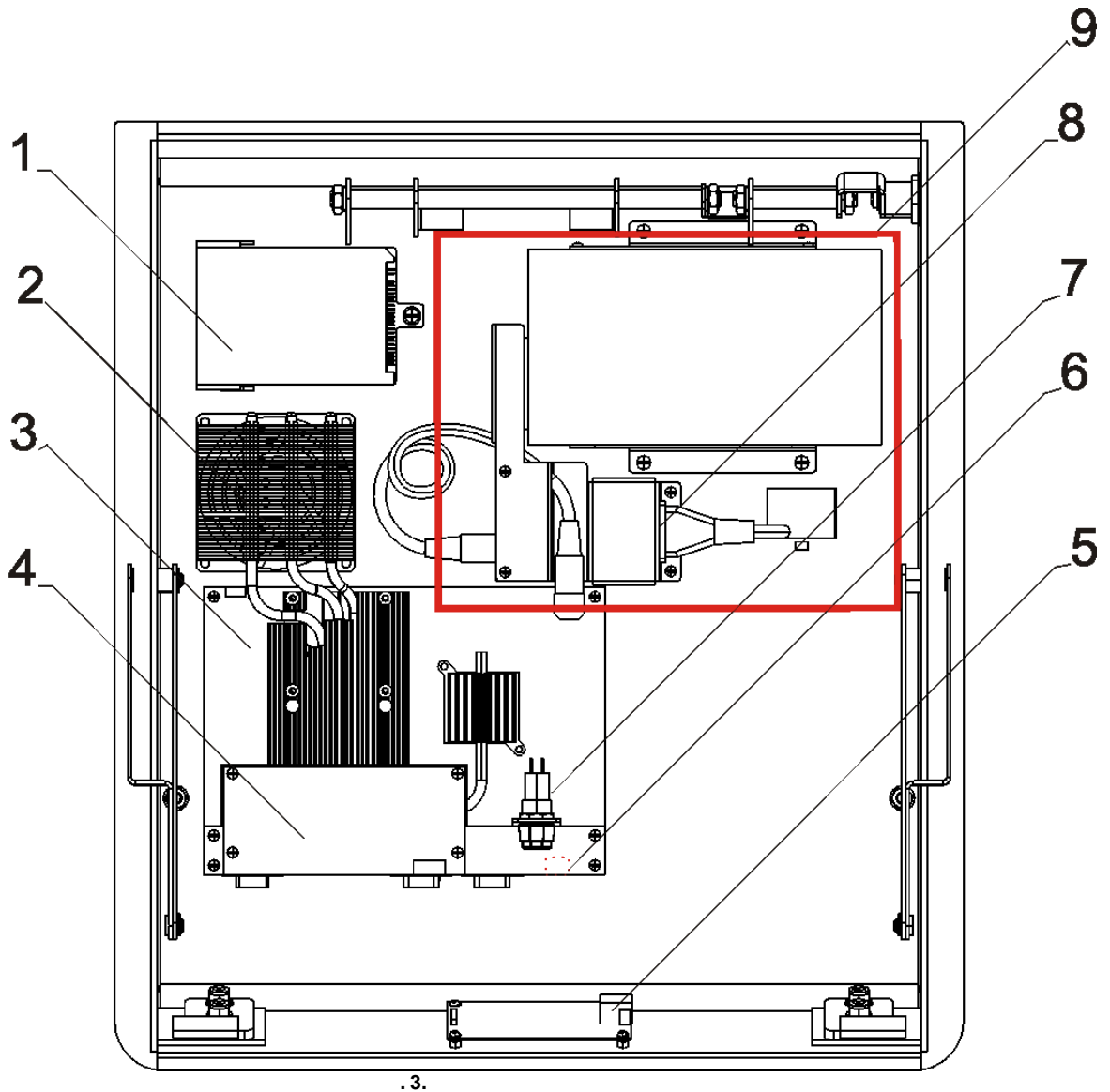
- 1.
- 2.
- 3.
- 4.
- 5.



1. -
2. 17",
3.



1.
2.
3.



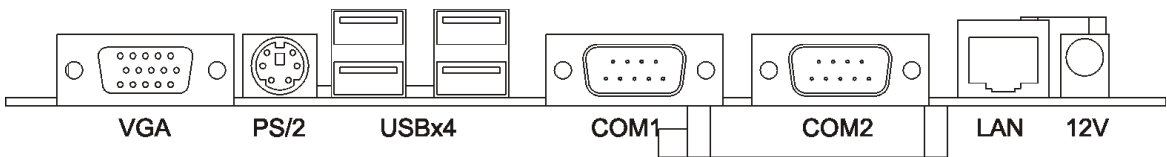
. 3.

- | | | | |
|----|----|----------|---|
| 1. | 5. | (|) |
| 2. | 6. | Ethernet | |
| 3. | 7. | | |
| 4. | 8. | 220 | |
| | 9. | | |

-
-
-
-
-

WatchDog
RS 485

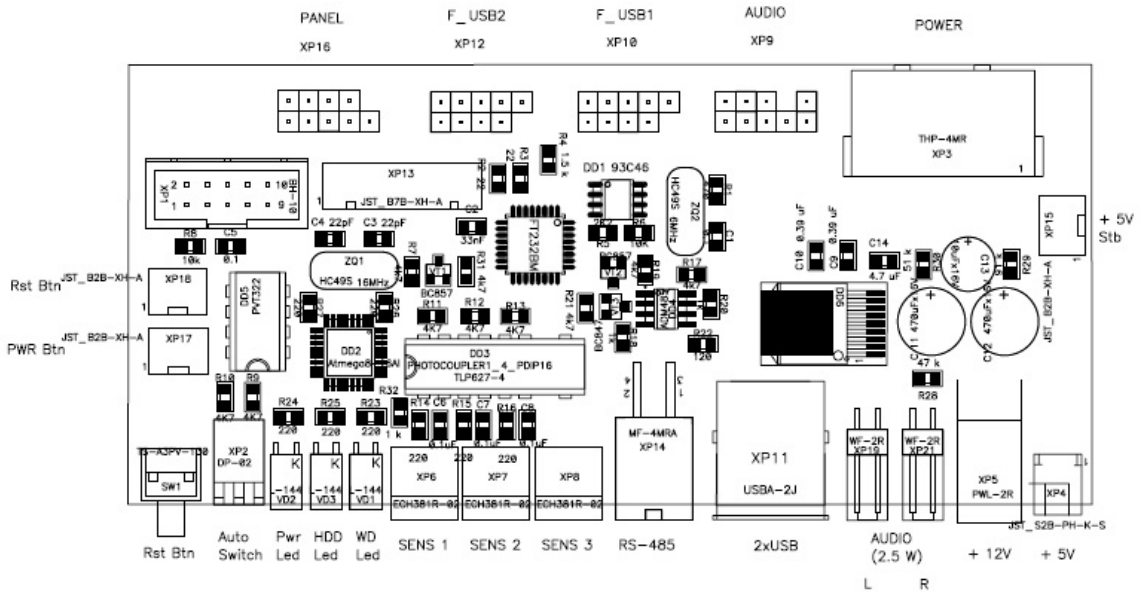
www.shtrih-m.ru



. 4.

- VGA -
- PS/2 -
- USB -
- COM1-2 -
- LAN -
- 12V -

12 .



. 5.

- Sw1 -
- XP2



DIP1 – ON –
DIP2 – ON –

SENS1 (OFF)

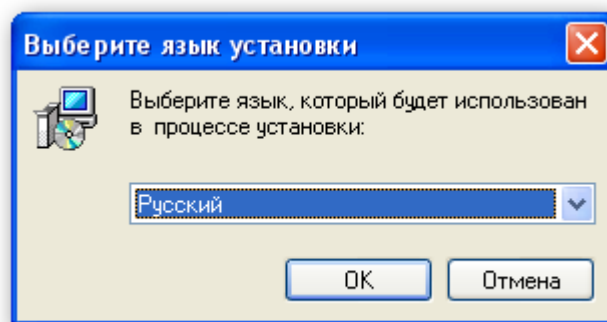
VD2 –
VD3 –
VD1 –
XP6, XP7, XP –
XP14 – RS-485
XP11 – USB.
XP19, XP21 –
XP5 – 12 .
XP4 – 5 .

“PWR LED”
“HDD LED”
“WD LED”
“SENS x”

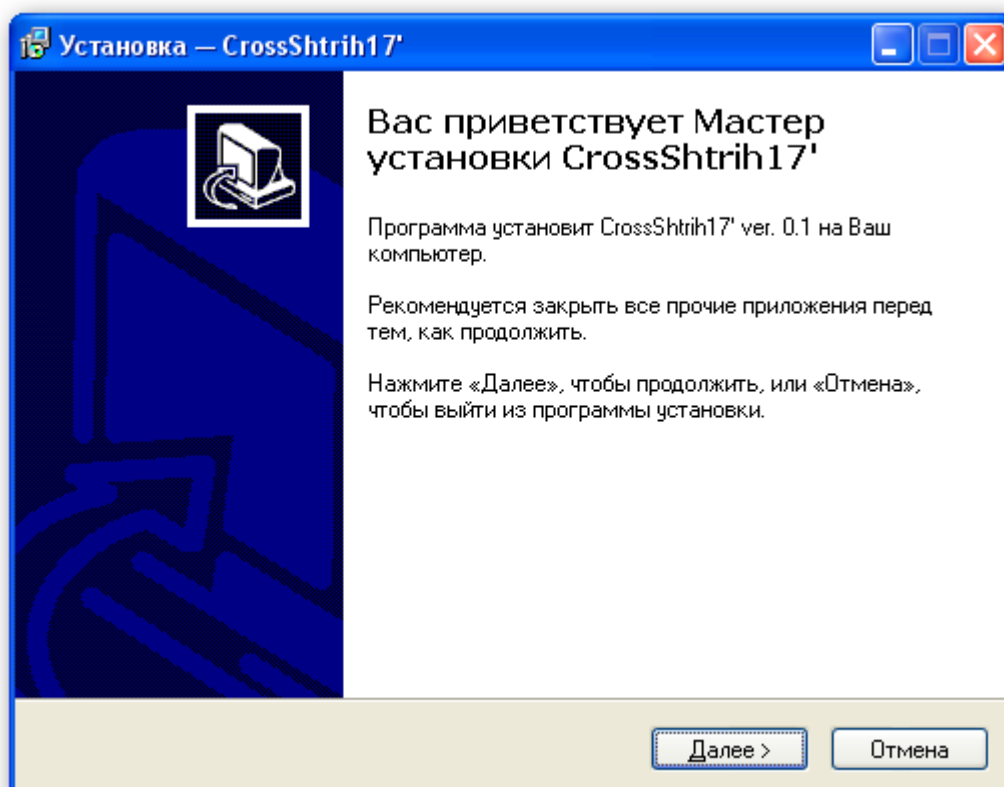
2A.
2A.

- 1.
- 2.
- 3.
4. FTDI (<http://www.ftdichip.com/Drivers/VCP.htm>)

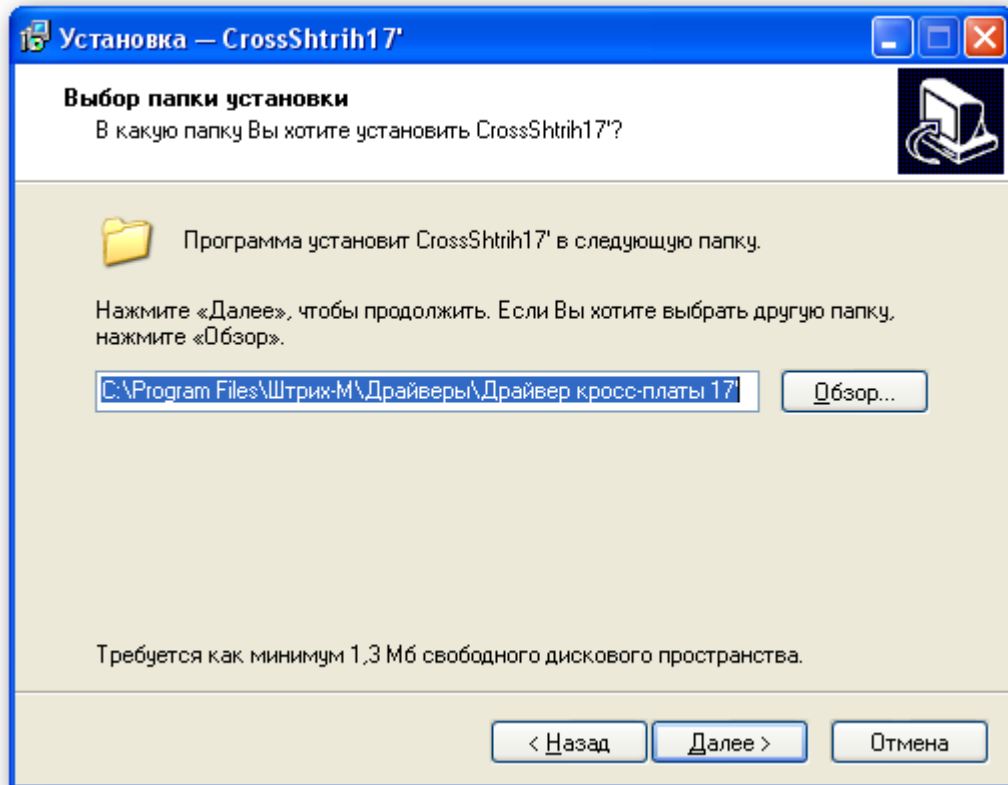
- 1.



- 2.

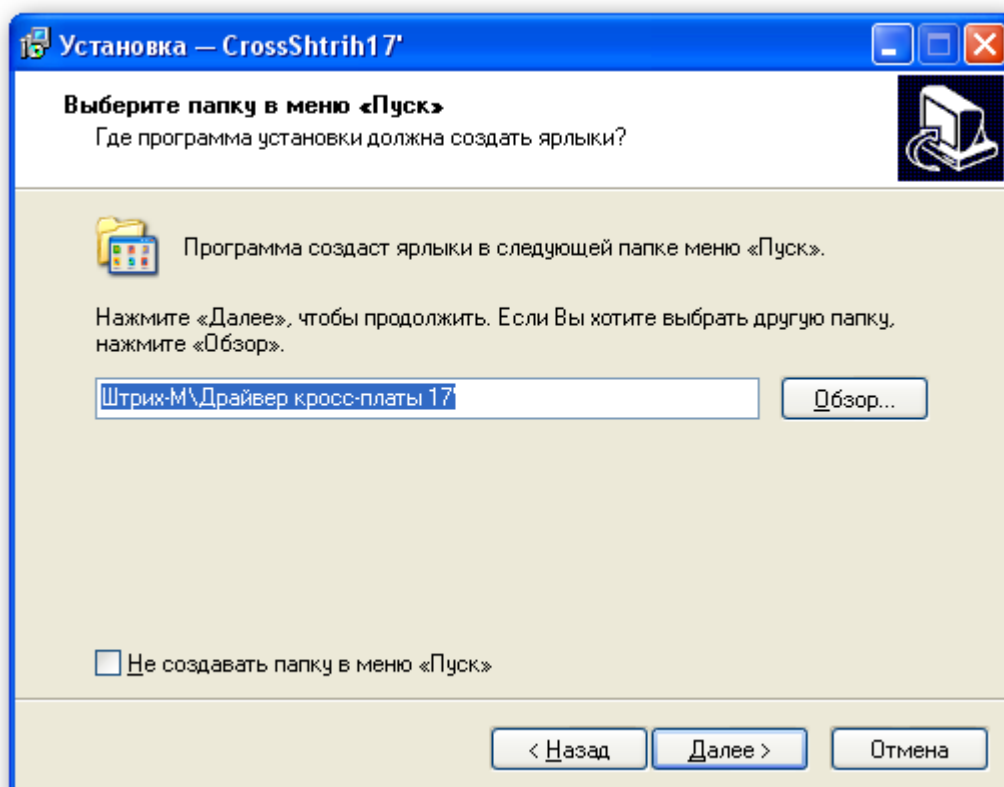


3.

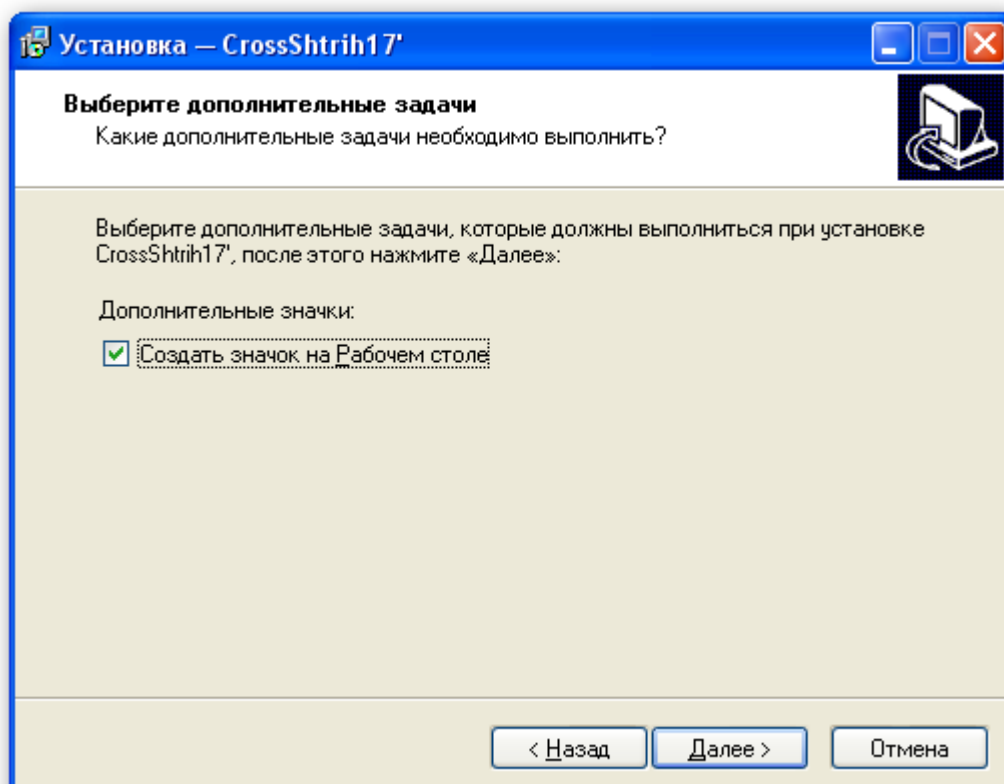


4.

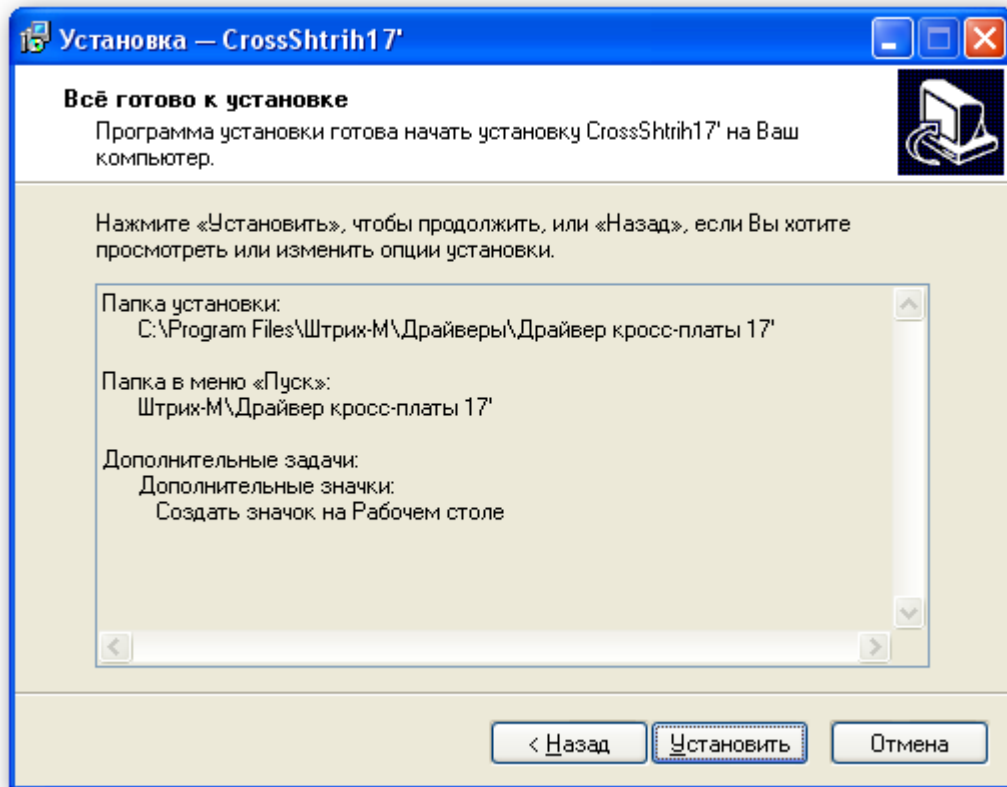
Windows.



5.

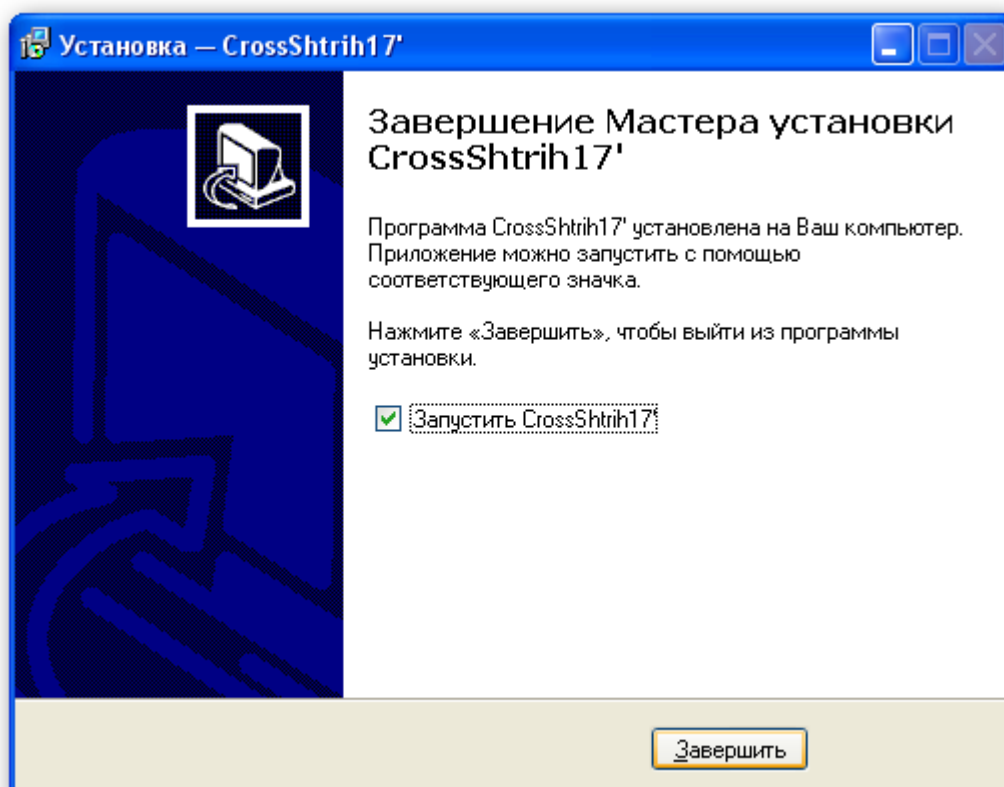


6.

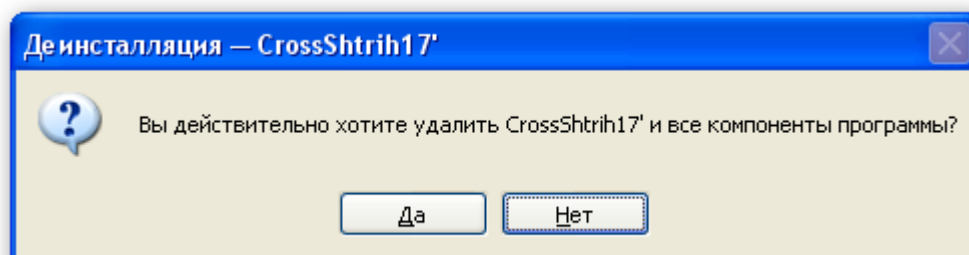


7.

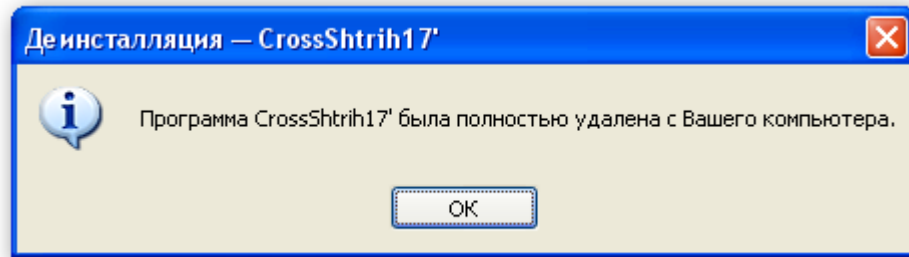
CROSSHTRIH17



1. " CrossShtrih17 Windows.

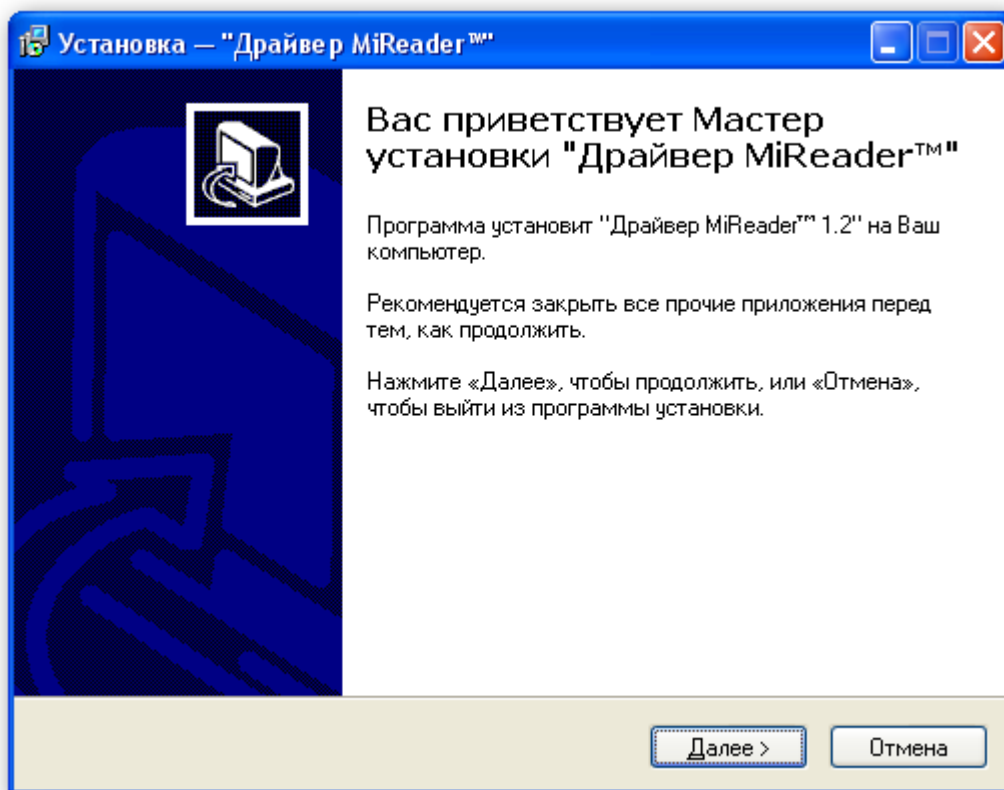


- 2.

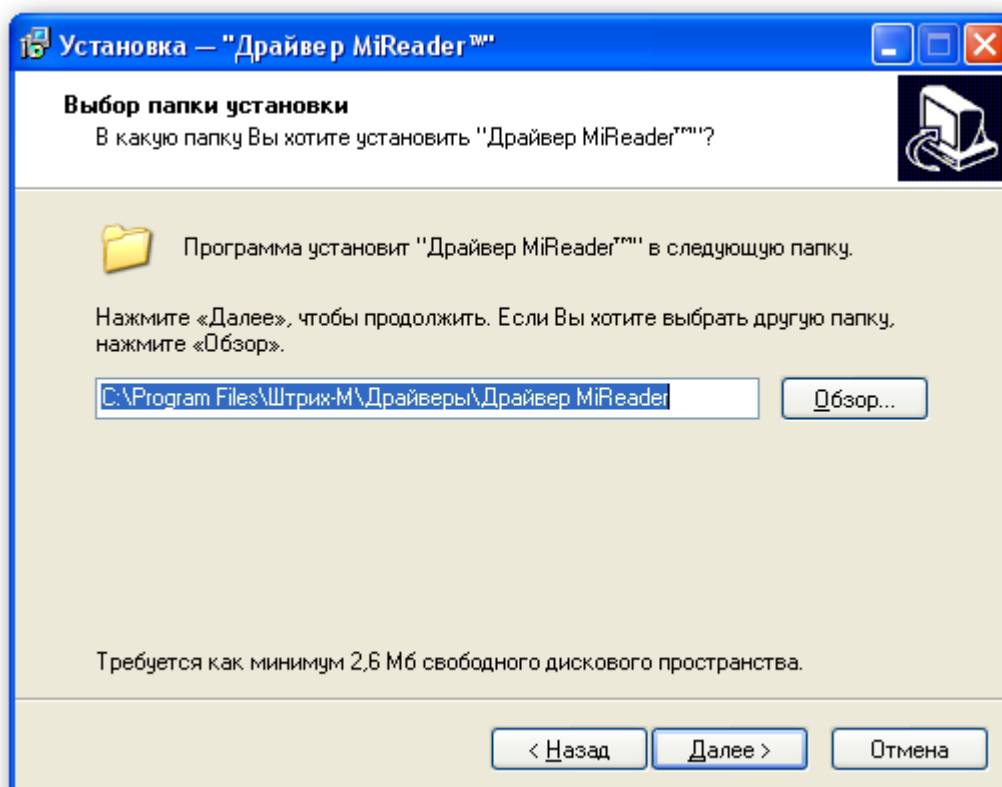


MiReader_ , - .

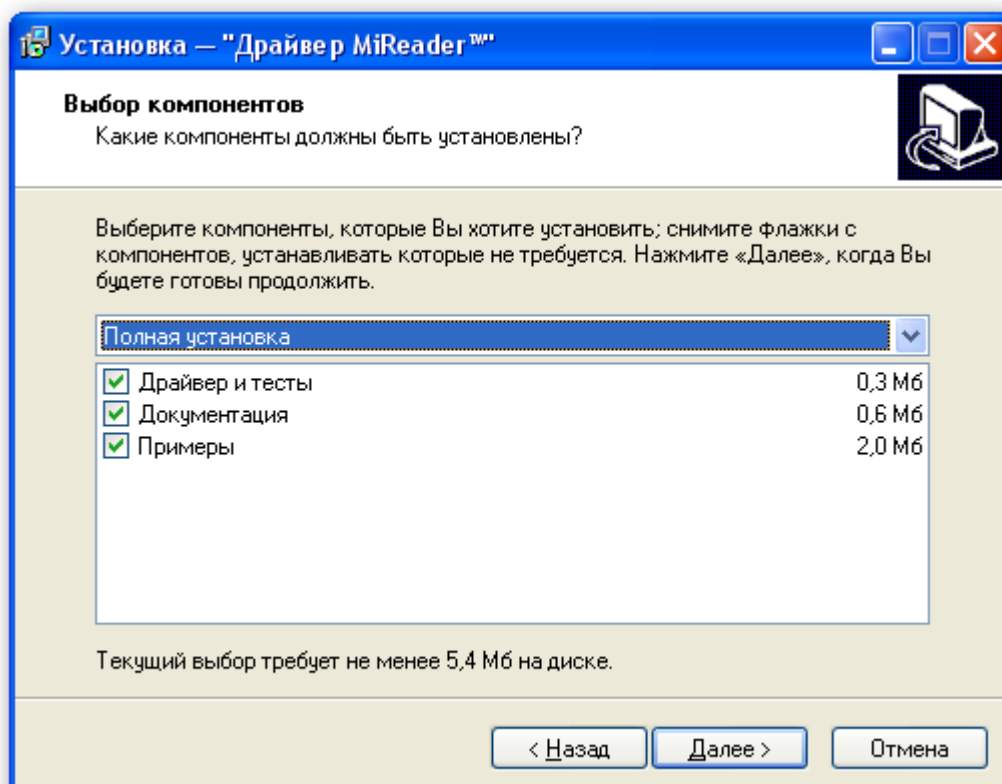
1.



2.

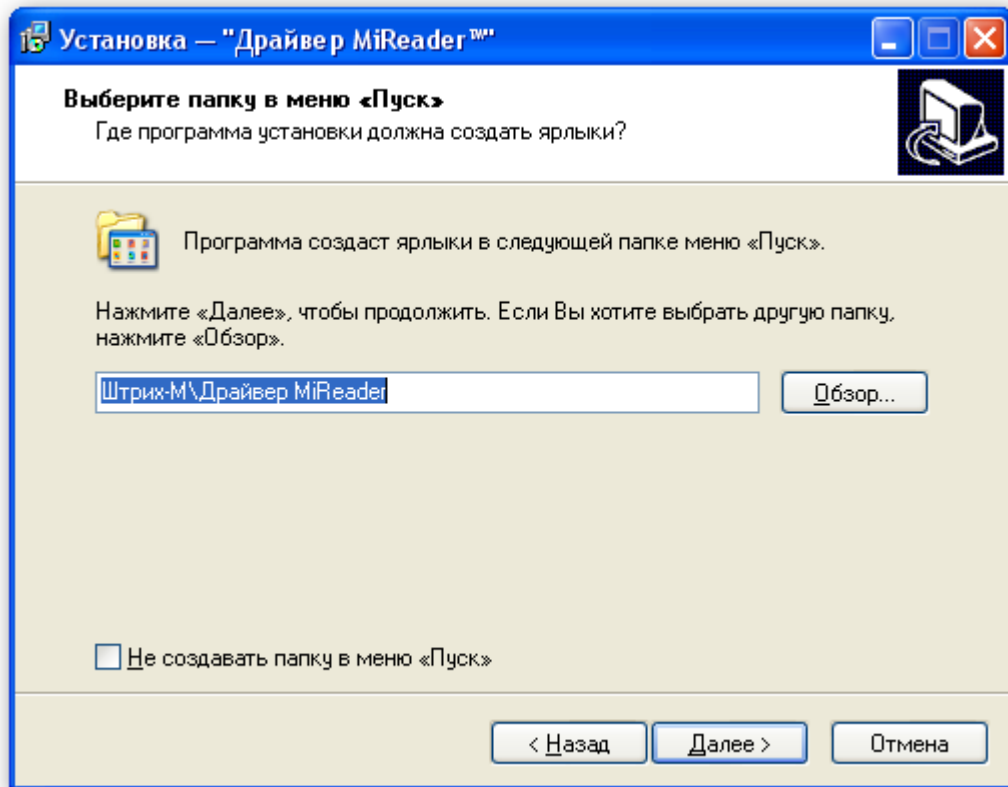


3.

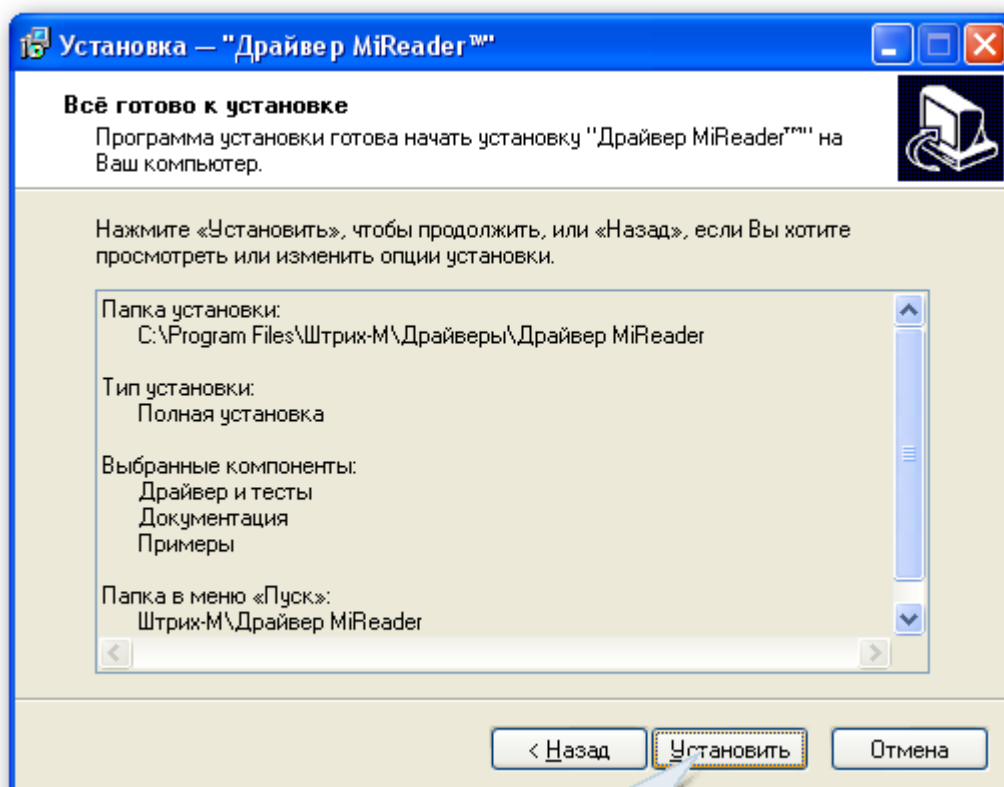


4.

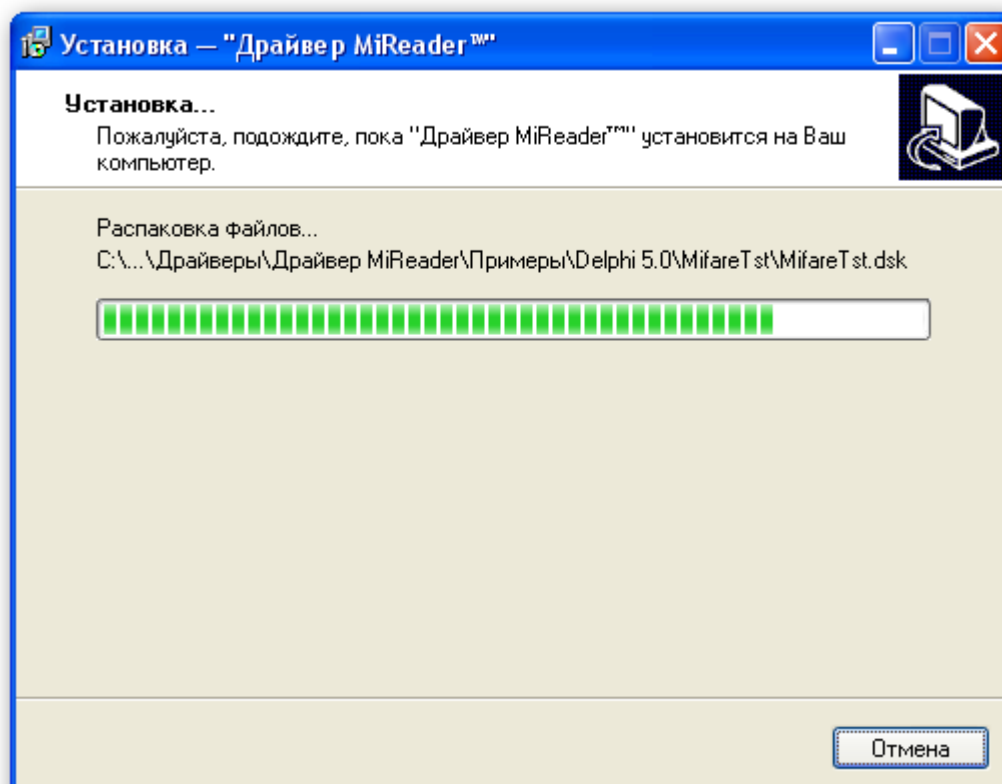
Windows.



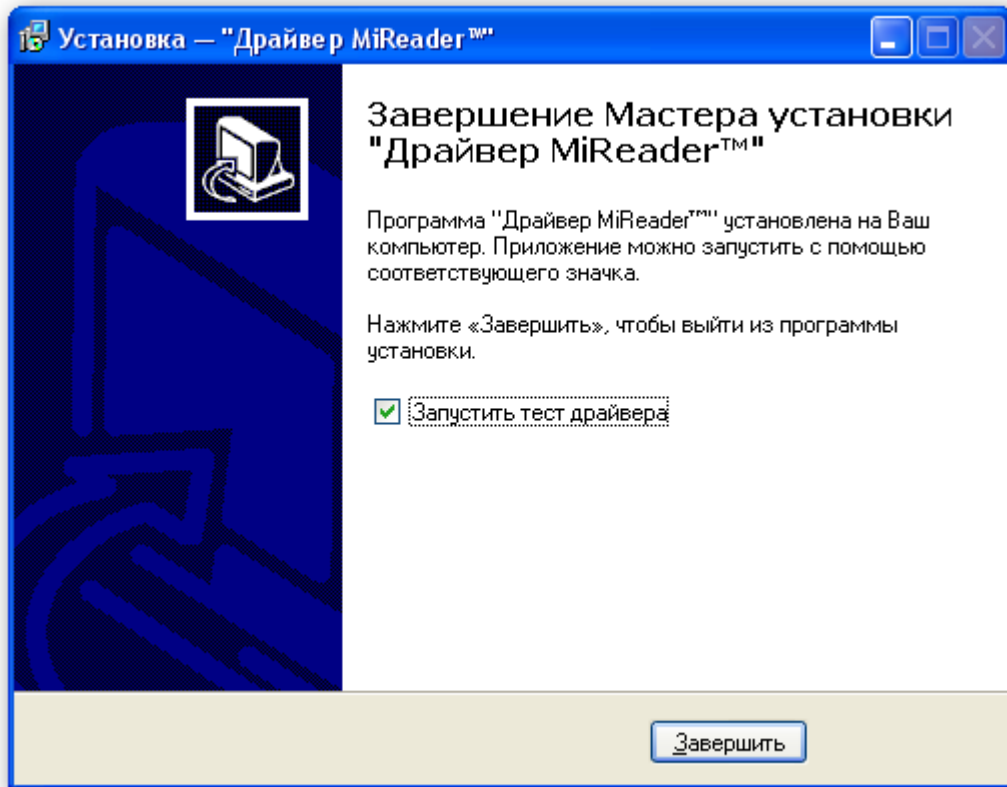
5.



6.

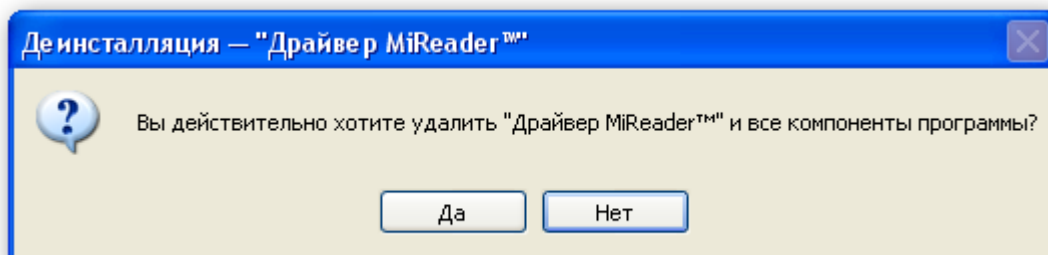


7.

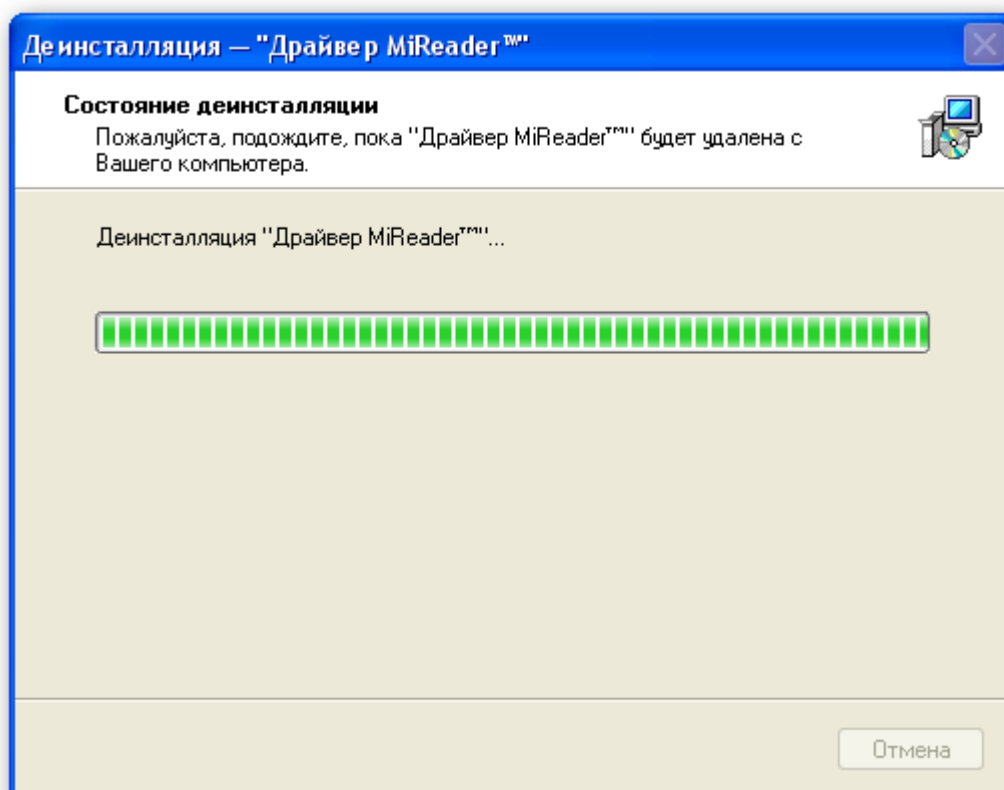


!

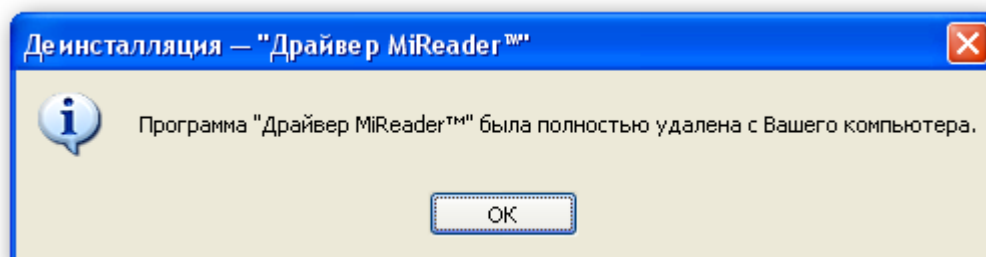
1. " MiReader_X Windows.



2.

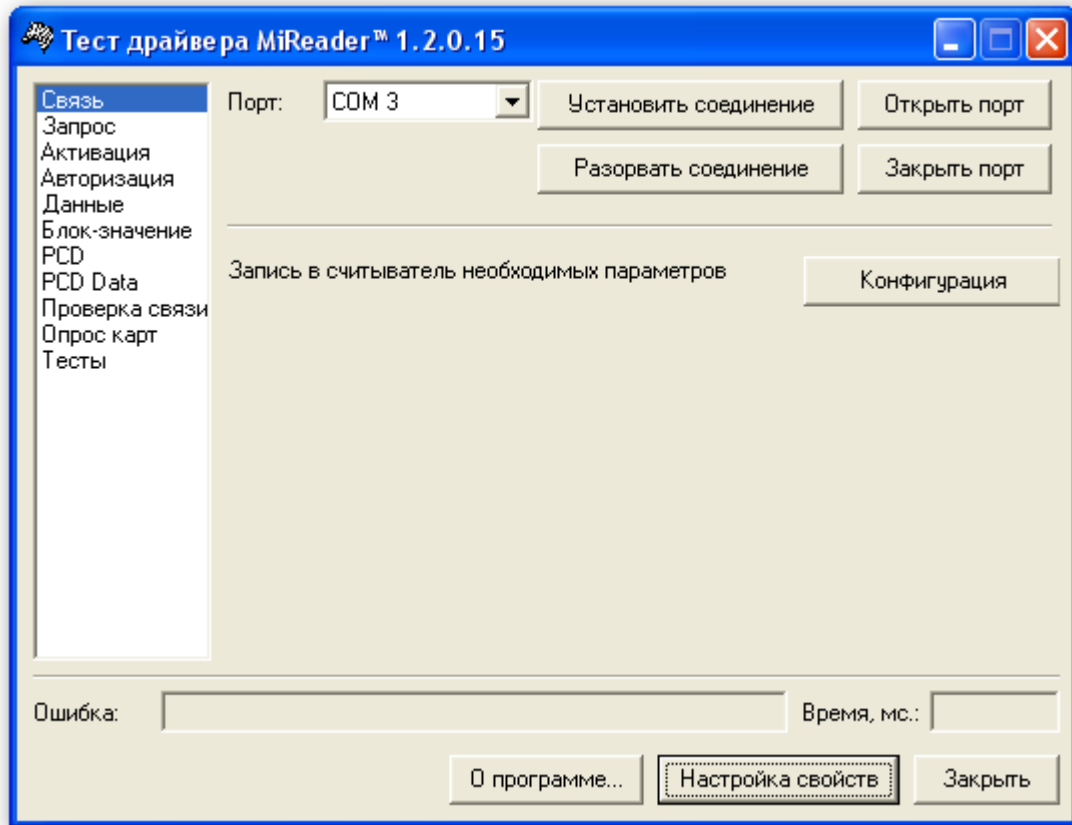


3.



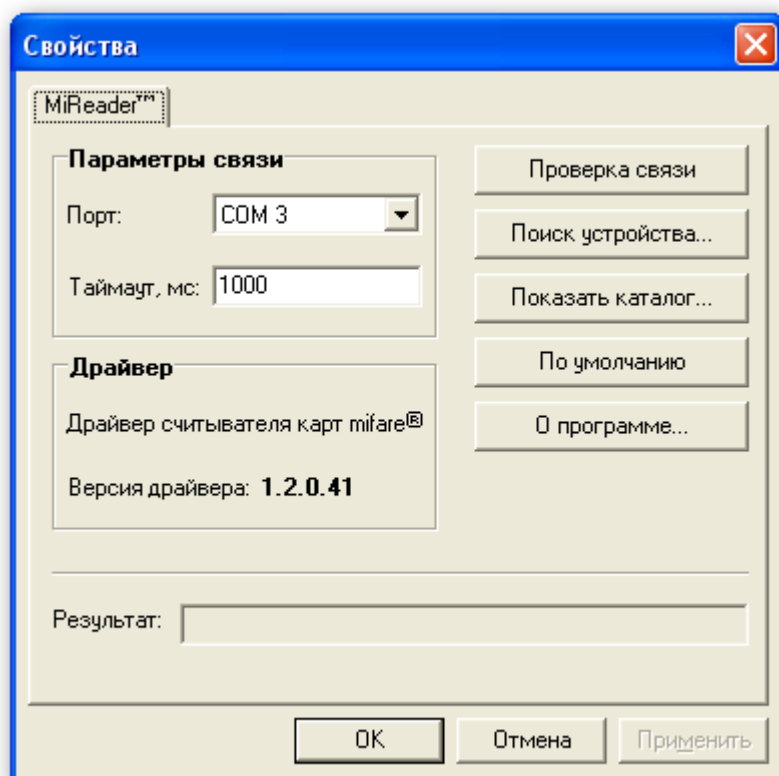
1.

2.

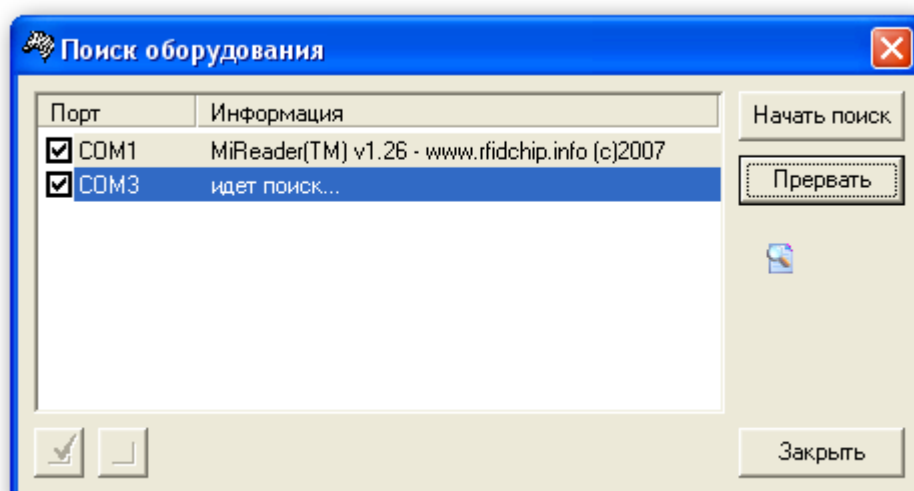


3.

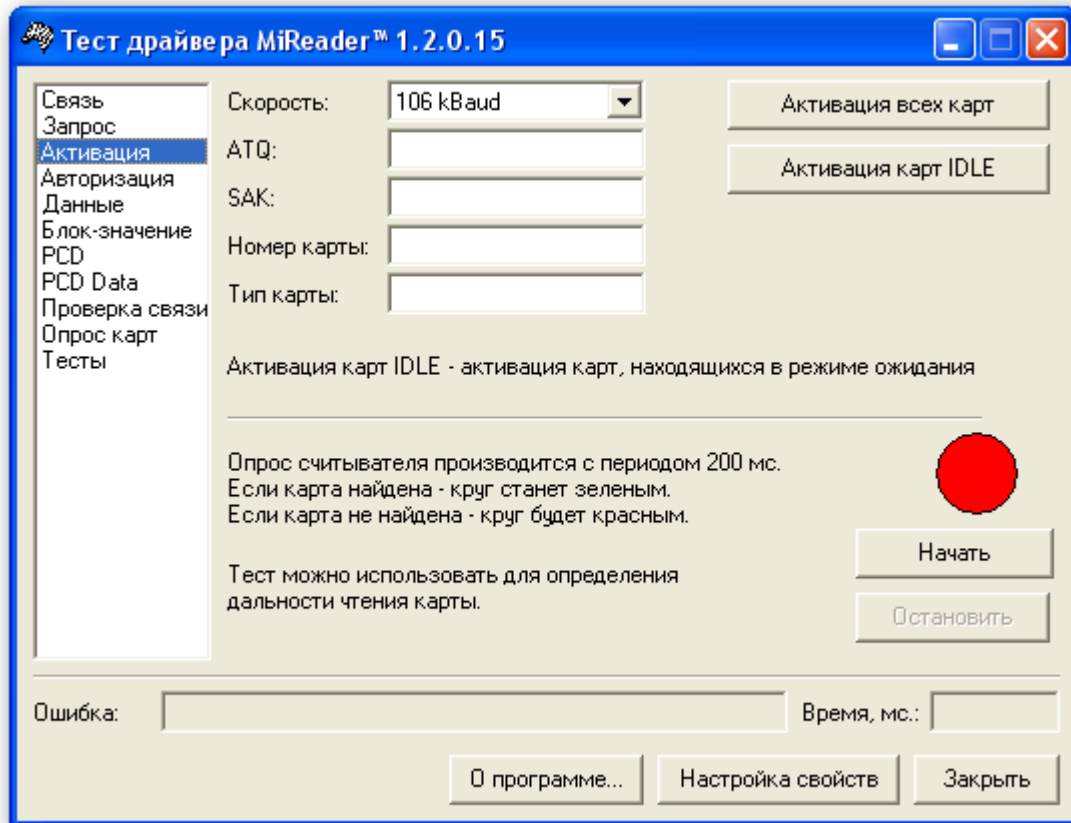
...



4. , 2 COM ,



5.



Logitech QuickCam pro 9000

Windows XP

USB

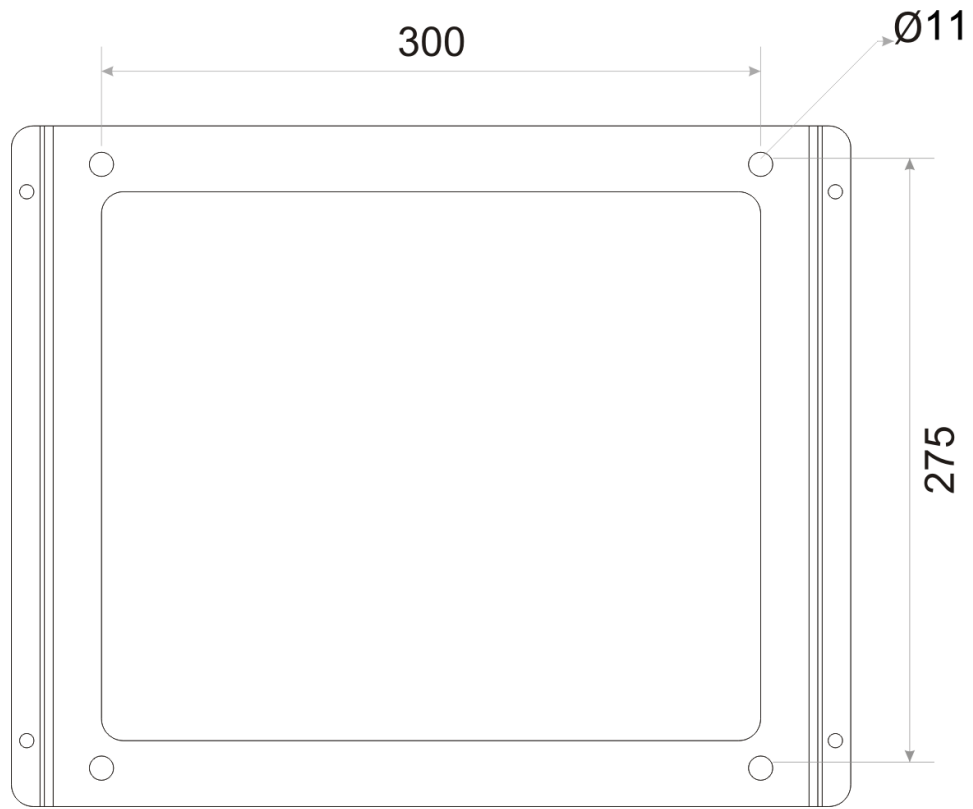
www.logitech.com

- :
1. 220
 2. (. 2 . 3)
 3. 220
-

!

- 4.
5. Ethernet.

1. (~170)
2. 4 Ø11 ,
5. ~138



.5.

3.

(.2 .3)

!

4.

().

6 DIN 985

!

(2. .2).

